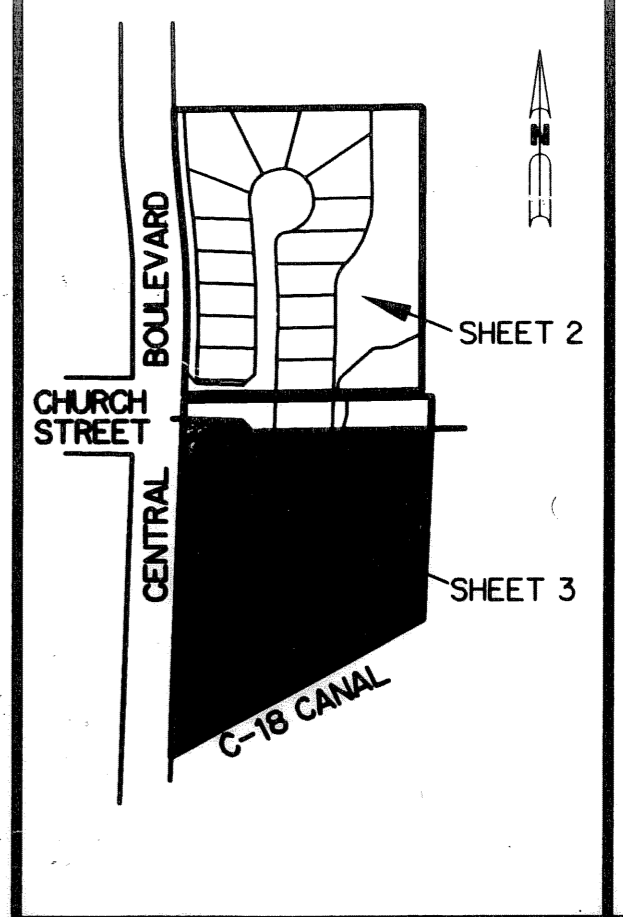


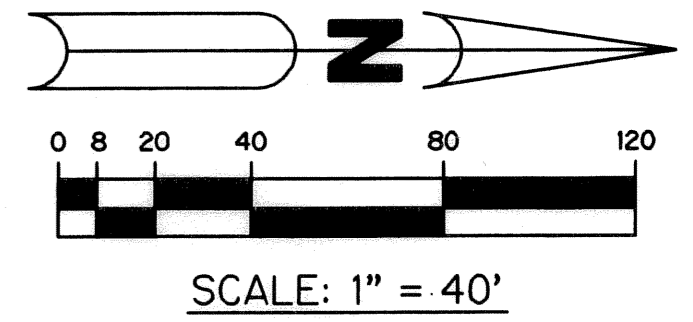
# SHORES POINTE

BEING A REPLAT OF A PORTION OF THE PLAT OF LOXAHATCHEE GARDEN FARMS AS RECORDED IN PLAT BOOK 2, PAGE 68 OF THE PUBLIC RECORDS OF PALM BEACH COUNTY, FLORIDA. LYING IN SECTION 34, TOWNSHIP 40 SOUTH, RANGE 42 EAST, TOGETHER WITH A PORTION OF THE NORTHEAST ONE-QUARTER OF SECTION 3, TOWNSHIP 41 SOUTH, RANGE 42 EAST, TOWN OF JUPITER, PALM BEACH COUNTY, FLORIDA SHEET 3 OF 3 AUGUST, 2004

103



KEY MAP  
N.T.S.



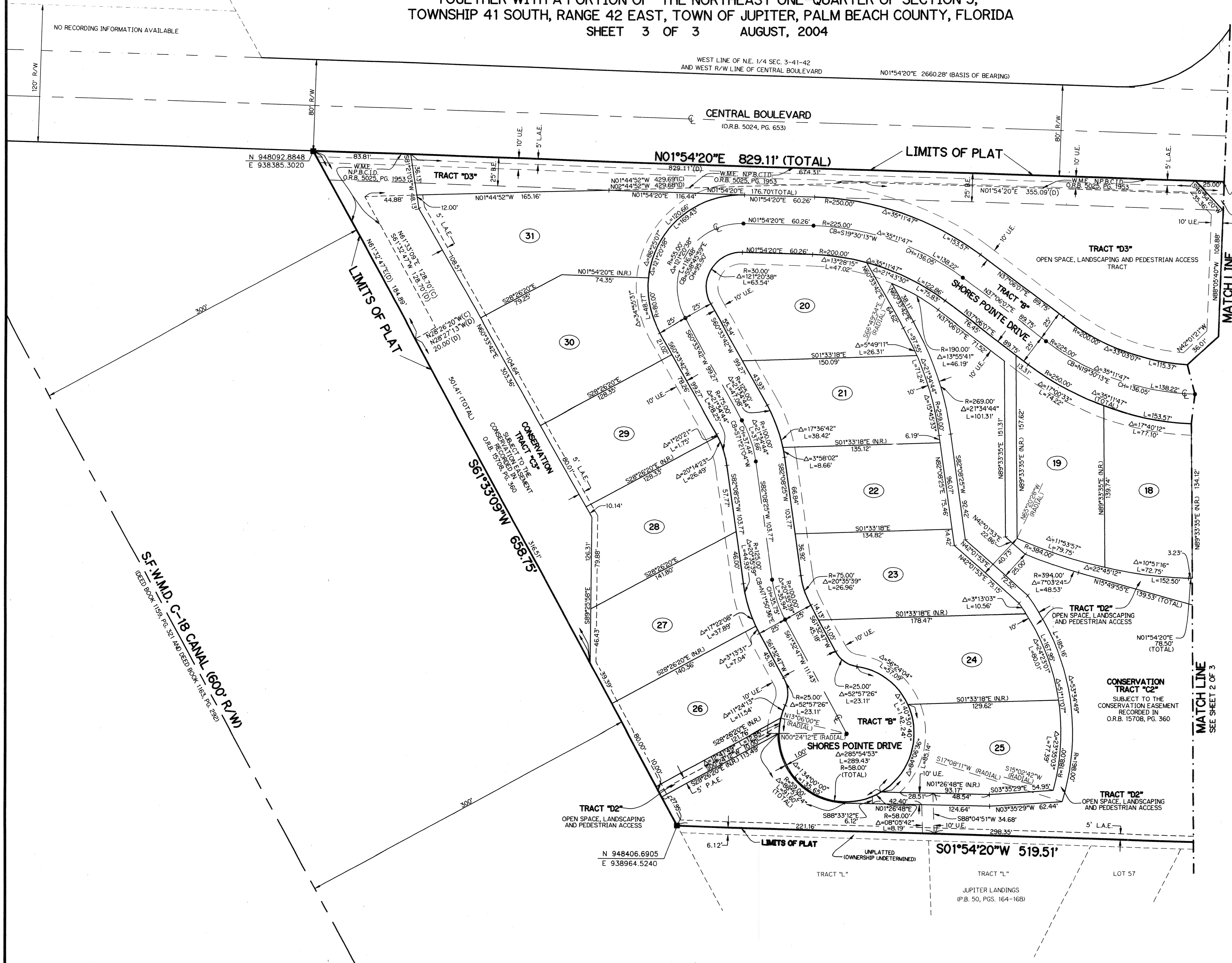
### LEGEND:

- - SET PERMANENT REFERENCE MONUMENT, L.B. #6674
- - FOUND PERMANENT REFERENCE MONUMENT, L.B. #6674
- - SET PERMANENT CONTROL POINT, L.B. #6674
- △ - FOUND PERMANENT CONTROL POINT, L.B. #6674
- Δ - DELTA ANGLE
- B.E. - BUFFER EASEMENT
- (C) - CALCULATED
- CB - CHORD BEARING
- CH - CHORD DISTANCE
- CL - CENTERLINE
- (D) - AS PER DEED
- D.B. - DEED BOOK
- D.E. - DRAINAGE EASEMENT
- L - ARC LENGTH
- N.P.B.C.I.D. - NORTHERN PALM BEACH COUNTY IMPROVEMENT DISTRICT
- N.R. - NOT RADIAL
- N.T.S. - NOT TO SCALE
- O.R.B. - OFFICIAL RECORD BOOK
- P.A.E. - PUBLIC ACCESS EASEMENT
- P.B. - PLAT BOOK
- PGS. - PAGES
- P.S.M. - PROFESSIONAL SURVEYOR AND MAPPER
- R - RADIUS
- RAD. - RADIAL
- R/W - RIGHT-OF-WAY
- S.F.W.M.D. - SOUTH FLORIDA WATER MANAGEMENT DISTRICT
- S.T. - SURVEY TIE
- U.E. - UTILITY EASEMENT
- W.M.E. - WATER MANAGEMENT EASEMENT (O.R.B. 5025, PG. 1953)
- N 948406.7040  
E 938964.5018 - DENOTES STATE PLANE COORDINATES

### NOTE:

COORDINATES SHOWN ARE GRID COORDINATES  
DATUM = NAD 83 (1990 ADJUSTMENT)  
ZONE = FLORIDA EAST ZONE  
LINEAR UNIT = U.S. SURVEY FEET  
COORDINATE SYSTEM = 1983 STATE PLANE TRANSVERSE MERCATOR PROJECTION  
ALL DISTANCES ARE GROUND  
SCALE FACTOR = 1.0000265  
PLAT BEARING = N01°54'20" E  
GRID BEARING = N01°54'18" E  
ROTATION = 00°00'02"

THIS INSTRUMENT PREPARED BY  
DAVID L. SMITH, P.S.M. 4951, STATE OF FLORIDA  
LAWSON, NOBLE AND WEBB, INC.  
ENGINEERS PLANNERS SURVEYORS  
420 COLUMBIA DRIVE, SUITE 110  
WEST PALM BEACH, FLORIDA 33409  
LB 6674



NO RECORDING INFORMATION AVAILABLE

S.F.W.M.D. C-18 CANAL (600' R/W)  
DEED BOOK 1159, PGS. 321 AND DEED BOOK 1153, PGS. 298

N 948406.6905  
E 938964.5240

JUPITER LANDINGS  
(P.B. 50, PGS. 164-168)

WEST LINE OF N.E. 1/4 SEC. 3-41-42  
AND WEST R/W LINE OF CENTRAL BOULEVARD  
N01°54'20"E 2660.28' (BASIS OF BEARING)

CENTRAL BOULEVARD  
(O.R.B. 5024, PG. 653)

N01°54'20"E 829.11' (TOTAL)

LIMITS OF PLAT

TRACT "D3"  
OPEN SPACE, LANDSCAPING AND PEDESTRIAN ACCESS TRACT

TRACT "D2"  
OPEN SPACE, LANDSCAPING AND PEDESTRIAN ACCESS

CONSERVATION TRACT "C2"  
SUBJECT TO THE CONSERVATION EASEMENT RECORDED IN O.R.B. 15708, PG. 360

SHORES POINTE DRIVE

TRACT "D2"  
OPEN SPACE, LANDSCAPING AND PEDESTRIAN ACCESS

LIMITS OF PLAT

UNPLATTED (OWNERSHIP UNDETERMINED)

N01°54'20"W 519.51'

MATCH LINE  
SEE SHEET 2 OF 3

MATCH LINE  
SEE SHEET 2 OF 3